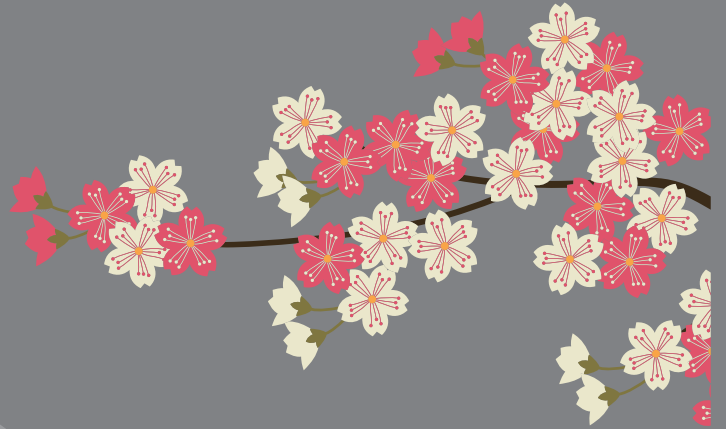


ALPS WINE



Natural Feature

ALPS WINE is located along the mountains in Fuefuki City, North of Mount Fuji and South East of Kofu Basin in the Yamanashi Prefecture. We are also adjacent to Katsunuma, an area which has the most output of grapes and wine in Japan. Since Yamanashi Prefecture is also famous for peach, the land nearby is also vastly covered by peach fields. Fuefuki was the central city of Yamanashi, with a history of over one thousand years, and there is even an old shrine dedicated to the goodness of fermentation and alcoholic drinks.

Our Winery

ALPS WINE Co., Ltd. was founded in 1962. We are a small family operated winery in Fuefuki City. Currently, the founder's son, Mr. Satoru Maeshima is the director of the winery. Moreover, Mr. Maeshima's three sons and daughters are the heart and soul of running ALPS WINE.



Our Aspiration

The motto of our company is, "Small company, but High quality."

The style and goal of our wine is to maintain the essential composition of the grapes and achieve a wine that is clean and clear in taste.

As a result, we have wine that is brilliant in flavor when fresh or aged.

WASHOKU : Traditional dietary cultures of the Japanese

With the recognition of “Washoku” (Japanese Cuisine) by UNESCO World Heritage, this is proof that the Japanese food culture is both healthy and unique.

The importance of “Washoku” lies in the freshness of the ingredients, thin seasoning and the harmony of the flavors. This in itself matches perfectly with the concept of Japanese Wines; Simple yet beautiful. Therefore making both a great match.

With Koshu Wine, seafood, sashimi and dashi are its best matches.

Furthermore, sukiyaki, eel, and teriyaki is great with Muscat Bailey-A or Ajiron.



ALPS WINE Co., Ltd.

418 Kitsunearai Ichinomiya Fuefuki
Yamanashi Pref. Japan 4050068
TEL: +81 (0)553-47-5881

For more information, please contact us
through E-mail or our facebook page.

✉ alpswine2004@minos.ocn.ne.jp



Alpswine Co., Ltd.



Export and trading:

MSEnterprise Inc.

A&A Building, 5-47-10 Asakusa Taito-ku Tokyo

Japan 1110032

TEL: +81 (0)3-6240-6412 FAX: +81-3-6240-6413



aoyagi.m@mse-asakusa.com

